

# Logistics

## GETTING THERE

The Hells Canyon Scenic Byway is 2 hours from Boise on I-84 and about 4 hours from Portland. You can also fly to Pendleton and rent a vehicle. Along Hwy 82, winding trails, lush valleys and Wallowa Lake await. Highway 86 offers grasslands, mountain views and access to Hells Canyon. The narrow USFS Road 39 has sharp curves, steep drop offs, a 6,000 foot high pass

and no cell-phone service. It is closed by snow from late October through May. Watch for wildlife and livestock on all roads, especially in May and June and in the fall. Find EV charging stations in Baker City, La Grande and Enterprise.

Plan ahead and check road conditions at [TripCheck.com](http://TripCheck.com)

## SEASONS

Spring is often chilly and wet, summers hot and dry, punctuated by awe-inspiring thunderstorms. The tawny grasslands begin to turn green in April; mid-May through late June offer optimal birding and wildflowers. October, with crisp, fall days, brings colors to mountains and valleys alike. In summer, make sure you travel with sunscreen, extra water and a fire tool (shovel). Wildfires and severe smoke may exist

for time during July through September. Cool fall weather lasts through November. Winters, including February and sometimes early March, are cold and snowy, great for skiing, snowshoeing and sledding, as well as the Eagle Cap Extreme dog sled races in late January.

Plan ahead and check wildfire and associated regulations at [wildfire.oregon.gov](http://wildfire.oregon.gov)



© Ellen Morris Bishop

## Accessibility

Seniors, travelers with strollers and those with disabilities: We can't wait to welcome you to Eastern Oregon, but we know finding the information you need can be challenging.

Find clear, detailed accessibility information for different sites along the byway at: [visiteasternoregon.com/plan-your-trip/accessibility](http://visiteasternoregon.com/plan-your-trip/accessibility)



© Ellen Morris Bishop

## Using This Map

This map highlights the natural wonders and endless recreation opportunities available in Oregon's north-eastern corner along the Hells Canyon Scenic Byway. Wallowa Mountains and beyond. Enjoy scenic drives, wildlife viewing, hiking, fishing, hunting, and more! Because this is a vast area with many trails and adventures, this map cannot detail it all. Always be sure to search local destination and land manager websites for more details.

LEARN MORE: [hellscanyonbyway.com](http://hellscanyonbyway.com) & [visiteasternoregon.com](http://visiteasternoregon.com)

There's Nothing Like **EASTERN OREGON TRAVEL**

Adventure Awaits in Northeast Oregon  
**HELLS CANYON WALLOWA MOUNTAINS Outdoor Recreation Map**



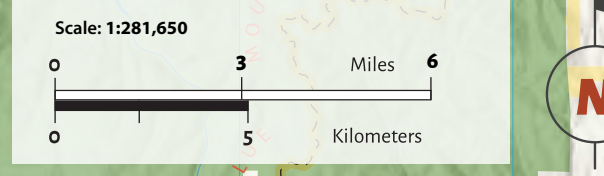
© Ellen Morris Bishop

**La Grande**

- Morgan Lake
- Ladd Marsh Management Area



LEARN MORE [hellscanyonbyway.com](http://hellscanyonbyway.com)



## LEGEND

- |  |                      |  |                    |
|--|----------------------|--|--------------------|
|  | Visitor Information  |  | Scenic Rail        |
|  | Museum               |  | Mountain Bike      |
|  | Cabin Rental         |  | Nature Viewing     |
|  | Camp                 |  | Paddle Sports      |
|  | Convenience Store    |  | Point of Interest  |
|  | Dark Sky             |  | Powerboating       |
|  | Day Use              |  | Powersports        |
|  | Disc Golf            |  | Quiet Snowsports   |
|  | Equestrian           |  | Restaurant/Bar     |
|  | Gas Station          |  | Road & Gravel Bike |
|  | Golf                 |  | Rock Climbing      |
|  | Grocery              |  | Rock Hounding      |
|  | Hike & Backpack      |  | Scenic Drives      |
|  | Historic Site        |  | Sporting Goods     |
|  | Hot Spring           |  | Swim               |
|  | Hunt & Fish          |  | Fire Lookout       |
|  | Lodging              |  | Walk & Run         |
|  | Winery & Brewery     |  | Winter Powersports |
|  | Interstate           |  | Seasonal Closure   |
|  | State/County Highway |  | TRAIL              |
|  | Local/USFS Road      |  | ROUTE              |
|  | Unpaved Road         |  | Mileage            |

## Seasonal Road Closures

Forest Service Road 39 — a part of the Hells Canyon Scenic Byway Loop — along with many other mountainous roadways in the region, experience annual closures due to inclement weather conditions.

Be sure to check with Wallowa Whitman National Forest staff for up-to-date information on road conditions and winter closures.

## Permits & Passes

When hiking into wilderness areas, you must complete the free Wilderness Permit form at the trailhead. Parking at most USFS trailheads requires a fee — usually \$5. An Interagency Senior Pass displayed on your dashboard allows you to park and use facilities without charge. Hay for horses and mules on national forests and wilderness areas must be certified as invasive weed free.

Hunting and fishing licenses can be purchased online with the Oregon Department of Fish and Wildlife. Boater requirements and permits can be found and purchased online with the Oregon State Marine Board. Please comply with marine invasive species inspection requirements. Off-highway vehicle (OHV) use at the Virtue Flat area and on all federal land in Oregon, Washington and Idaho requires a permit. The permits can be obtained online at: <https://store.oregonstateparks.org> or many local OHV dealers. Sno-Park parking fees are required at Clear Creek Sno-Park, Salt Creek Summit Sno-Park, and Catherine Summit Sno-Park.

## Take Care Out There

- PREPARE**  
*Plan Ahead*  
Prepare before you head out, consider what you want to see and experience, your group's physical abilities and what's realistic to do in the time you have. Can you visit off peak to avoid crowds?
- CARE**  
*Make Smart Choices*  
Know your limits and when to stop for the day. Follow the signs, they're there to tell you important stuff like how to avoid injuries and not get lost.  
*Be Respectful*  
If you're lucky enough to spot wildlife, use your zoom lens and observe from afar. Share trails with others. Know who manages the land you access and what the rules and regulations are.  
*Be Ready*  
Check conditions. Pack your Ten Essentials. Got the right shoes for the terrain? Water? Cell phone? You may not always have coverage so take a picture of the trail map or bring one with you. Consider hiring a guide.  
*Don't Forget*  
Let someone know where you're headed and when you plan to be back. Tuck some cash in your pocket for park fees (that help maintain our natural spaces).
- CONNECT**  
*Enjoy Yourself*  
Experiencing the quiet, awe-inspiring beauty of nature can not only uplift your spirits, it can improve your health. Think of Oregon's vast outdoors as your place to relax and recharge.  
*Say Hello*  
Greet fellow adventurers and spark a conversation. Check in at a visitor center, ranger station and/or local business to learn from the locals, grab a map and gather local insight.  
*Spread Goodwill*  
Share your knowledge with others if it's helpful. Support the community—eat, drink, shop and stay local. Stop by cultural centers to learn our history and relationship to place.



© Ellen Morris Bishop



Adventure Awaits  
in Northeast Oregon

# HELLS CANYON WALLOWA MOUNTAINS

Welcome to the homeland of the Nez Perce, Colville, Cayuse, Umatilla and Walla Walla Tribes, to trails that wind through granite peaks, azure lakes and North America's deepest canyon where the wild Snake River carves its way through the Hells Canyon Wilderness. You'll find gold mines, ghost towns, rivers to float, lakes to fish, summer solitude and a winter wonderland in this quiet rural refuge tucked into Oregon's northeastern corner. This byway is a designated All-American Road, one of the nation's premier scenic routes and entree to history, culture and the great outdoors.

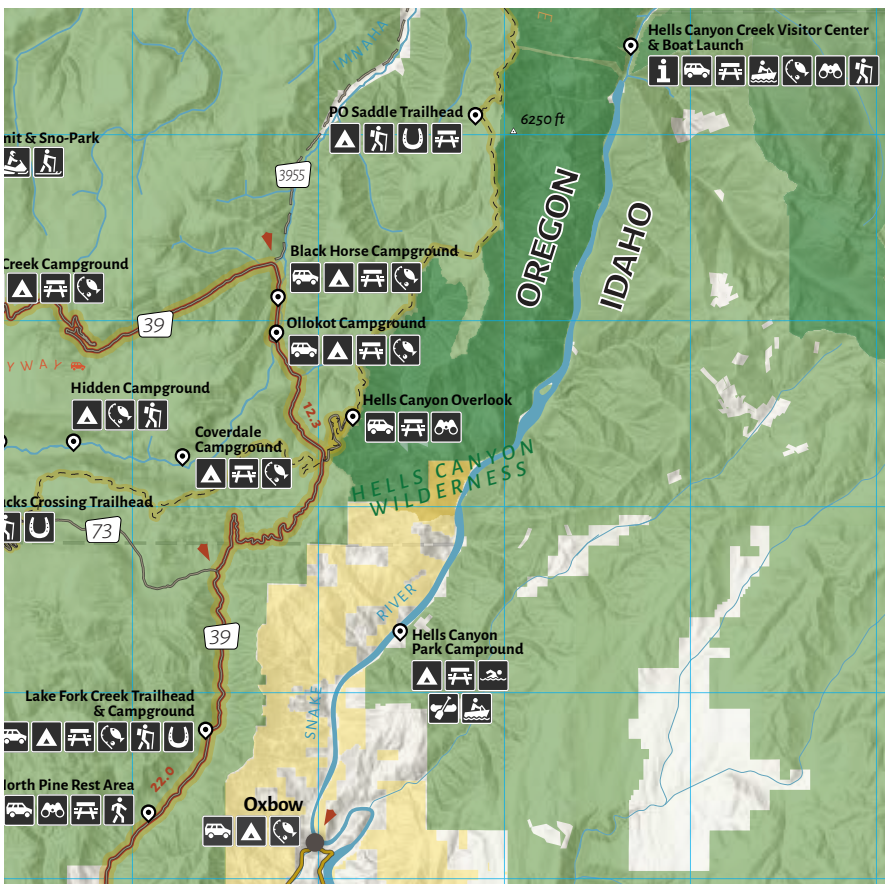
The craggy mountains and rugged canyons of the Hells Canyon Scenic Byway showcase some of the West's most iconic geology. That includes granites in the core of the Eagle Cap Wilderness and older sedimentary and volcanic rocks of ancient islands. These are topped by Columbia River basalts 14 to 17 million years old. Wallowa Lake is a world-class example of a glacially-formed Ice Age lake.

The Hells Canyon Scenic Byway leads you into the heart of the Nez Perce homeland. Nez Perce ancestral settlements date to at least 16,500 years ago. Other tribes also hunted, fished and gathered here. The Wallowa Valley, Wallowa Mountains and even Pine Valley on the Wallowa's south side were Chief Joseph's band's home. His people, the Walwama band of Nez Perce, were violently driven out of their homeland in 1877 as conflicts over land and culture arose. To learn more, visit the Nez Perce Homeland Interpretive Center and the Wallowa History Center in the town of Wallowa, or stop at the Joseph Center for Arts and Culture. You can also visit the grave of Chief Joseph's father, Tiwiteqis—part of the Nez Perce National Historical Trail—near the north end of Wallowa Lake, or journey to the Joseph Canyon Viewpoint on Hwy 3 about 20 miles north of Enterprise.

The Oregon Trail led immigrants bound for the Willamette Valley through the Baker and Grande Ronde valleys beginning about 1845. When gold was discovered near Baker City in 1862, miners and the businesses that supported them established towns, including Baker City and La Grande. Prolific gold mines included the Virtue Flat Mine near Baker City and Cornucopia, 12 miles north of Halfway. In the Baker City area the Sumpter Gold Dredge operated until the 1950's.

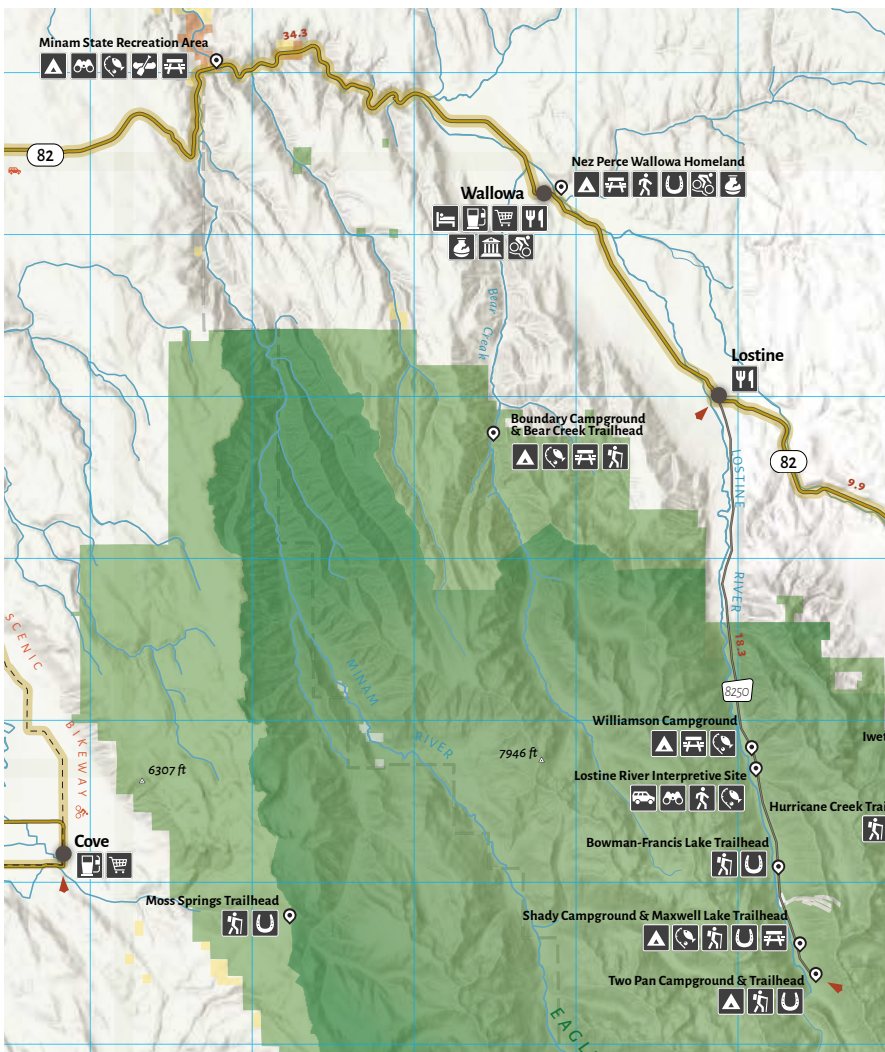
White settlers arrived in the Wallowa Valley in 1872. They found the streams teeming with salmon, lush grasses ideal for livestock grazing and a landscape long inhabited and managed by the Nez Perce people. Ranching and timber became the region's economic mainstay.

## HELLS CANYON VISITORS CENTER & SOUTHEAST WALLOWAS



Hells Canyon, the deepest gorge in North America, marks the boundary between Oregon and Idaho. It defines the easternmost part of the Hells Canyon Scenic Byway. This 7,200-foot deep canyon was hewn through ancient metamorphosed rocks and Columbia River basalts by the relentless force of the Snake River and a powerful Ice Age flood. The canyon is home to Rocky Mountain bighorn sheep, others, eagles and bears; sturgeon and salmon ply the river. Most of it is included in the Hells Canyon National Recreation area.

## WALLOWA & LOSTINE



Ellen Morris Bishop



Ellen Morris Bishop

Today, this area remains a very rural place. Ranching and agriculture are still its economic mainstays.

Wallowa Lake and Wallowa Lake State Park are scenic attractions for visitors. Campgrounds include Wallowa Lake State Park, Minam State Park and Catherine Creek State Park, plus many USFS facilities. Check out the breweries, distilleries and other local fare. There are ranch rodeos, pro-rodos and powwows. Local outfitters offer river floats, guided fishing and hunting, horse and llama pack trips, and other recreation. Sporting-goods stores in larger towns can provide your trip.

River guide companies in Halfway and Joseph offer raft trips through Hells Canyon May through October. You can book jet boat trips upriver with outfitters in Halfway, OR, Lewiston, ID and Clarkston, WA.

The deepest, most remote parts of the canyon, designated Hells Canyon Wilderness, are accessible via rugged trails from the 39 Road and Imnaha River Road and link with the longer Snake River Trail (1726). You can experience the depth and ruggedness of this terrain on a 26-mile drive along the Idaho Power and Light (IPALCO) road to the Hells Canyon Dam and the USFS Hells Canyon Visitors Center. This paved road begins on the Idaho side of the Snake River at the end of Hwy 86.

Hells Canyon has been the homeland of the Nez Perce people for more than 16,000 years. Beginning in the late 1800s, settlers grazed livestock in the canyon, establishing many remote ranches along the Snake River. The Hells Canyon Visitors Center tells the stories of the canyon and its geologic, mining, human and natural history.

If you are looking for fishing, paddleboarding or other water recreation, stay on the Oregon side of the river and take Hwy 71 south towards Brownlee Dam to find boat ramps along Oxbow Reservoir or explore access into Hells Canyon Reservoir on the IPALCO Road.

As you head back towards Baker City, take the USFS 39 road north about 18 miles to find USFS Road 490 to Hells Canyon Overlook near McGraw Lookout for a view into the canyon that you just explored. Continue east on Hwy 86 to the town of Halfway and its Pine Valley History Museum. Halfway is the gateway to Fish Lake on USFS Road 66 and several trailheads: Lakes Fork Trail (1876) or Deadman Trail (1869). Continue 12 miles north on Cornucopia Highway to the ghost town of Cornucopia (now private property) and trailheads to Pine

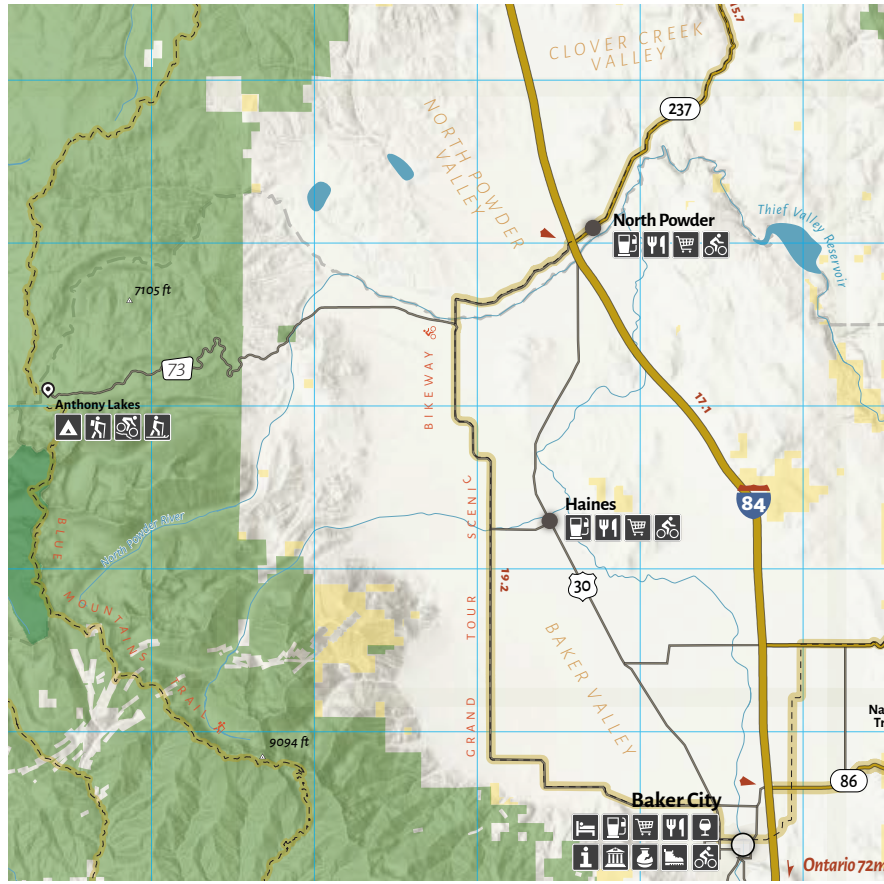
Wallowa and Lostine are small towns on Hwy 82 northwest of Enterprise. Each has its own attractions and a gateway to exploration of less-traveled adventures in and around the Eagle Cap Wilderness.

Lostine ushers you up the Lostine River Road, which heads south through the river's classical U-shaped glacial valley into the Wallowa Mountains. The Lostine River is home to steelhead and rainbow trout, a spawning ground for Chinook and Coho Salmon, and a great cold-water fishing stream. You'll enter the Wallowa Whitman National Forest about five miles from the Junction of Hwy 82 and Lostine River Road (County Road 55). Here it becomes a well-maintained gravel road. USFS Road 8250. In less than a mile you'll find a turnout to the Pole Bridge Picnic Area—a relaxing place to get up close and personal with the river. Farther along Road 8250 you can access fishing spots, river overlooks, short trails along the river, three USFS campgrounds and five trails that lead into the Eagle Cap Wilderness before the road ends at Two Pan trailhead 11 miles from the USFS boundary. The trail here that leads into the Lakes Basin (1662) is heavily used, but the others, including 1670, which also starts at road's end and tours the wild West Fork of the Lostine River, are less trodden.

Wallowa boasts two not-to-be-missed attractions: the Nez Perce Wallowa Homeland and the Wallowa History Center. The Nez Perce Wallowa Homeland tells the story of Chief Joseph's band in detail, including Nez Perce culture and customs. It includes the 323 acre Tamkaliks grounds, a publicly accessible landscape where you can stretch your legs, walk your dog and climb a narrow 3 mile interpretive trail to the top of Tick Hill for an extraordinary view of the Wallowa Valley and the mountains beyond. The Wallowa History Center occupies the historic USFS Bear Creek Ranger Station at the west edge of town. It provides information about the Nez Perce, the history of

Ellen Morris Bishop

## ELKHORN MOUNTAINS & BAKER CITY



Baker City is known as Oregon's "Queen City of the Mines" and is an important stop on the Oregon Trail. Today it's the gateway to the Elkhorn Mountains and offers museums, parks, historic sites and the Wallowa Whitman National Forest Headquarters.

In the town, which was once the largest city between Portland and Salt Lake City, you'll find the

Baker City Historic District, which includes the restored Geiser Grand Hotel, Baker Tower and Crossroads Carnegie Art Center. Museums here include the Adler House and Baker County Heritage Museum. The Wallowa Whitman National Forest Headquarters, at the south end of the historic district, is a great place to obtain maps and advice about trails and other recreational opportunities. The National Historic Oregon Trail Interpretive Center and several hiking trails are perched on a hilltop 2 miles east of Baker City on Hwy 86. Just south of the interpretive center you'll find the Virtue Flat Off-Highway Vehicle Area with trails suitable for all classes of OHVs from motorcycles to quads. An Oregon ATV permit is required here.

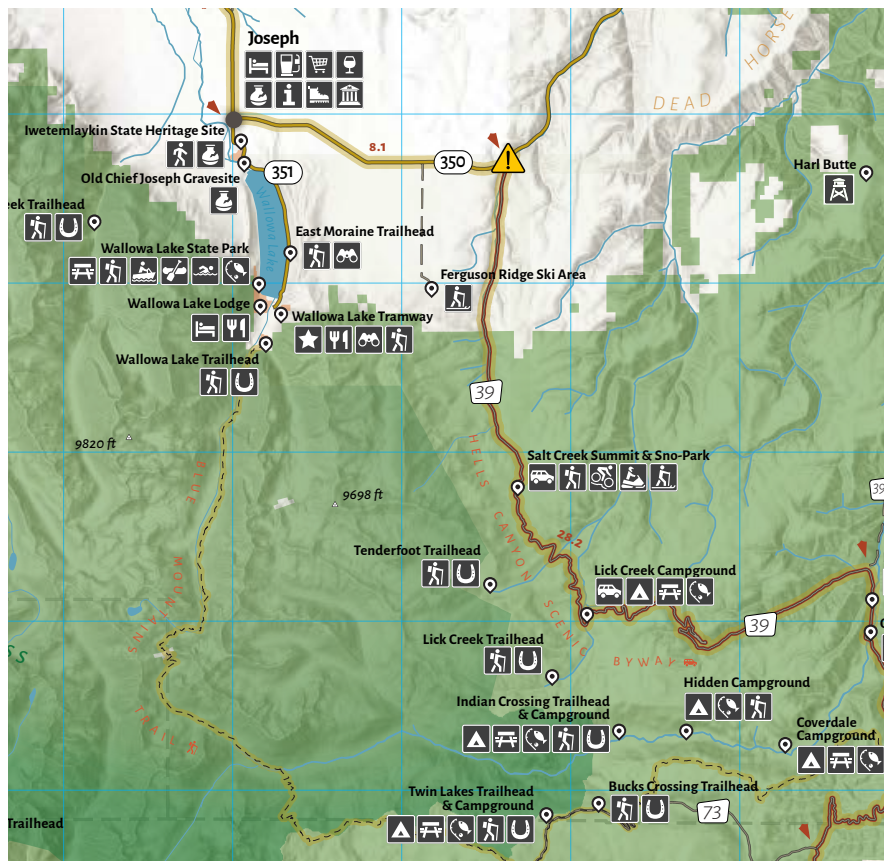
The Elkhorn Mountains, with wildlife, historic sites and trails to explore, boast peaks of about 9,000 feet. The most noteworthy include Elkhorn Peak and Rock Creek Butte. Head west on Hwy 7 to find the historic gold State Park, as well as the steam-powered Sumpter Valley Railway that hauled logs and gold to Baker City and beyond. En route, you'll find Phillips Reservoir and opportunities to fish in the Powder River at the USFS Powder River Recreation site. The USFS Union Creek Campground provides boating and swimming access to Phillips Reservoir. Along Hwy 7, you can also access USFS trails that lead into the Elkhorn Mountains, including Twin Lakes Trail 1633 (off USFS Road 6550-030) that climbs to the Elkhorn Crest trail.

Baker City's mining heritage is also evident on the east side of the Elkhorn Mountains, where trails through forest lead to rugged peaks on the USFS Wild and Scenic Powder



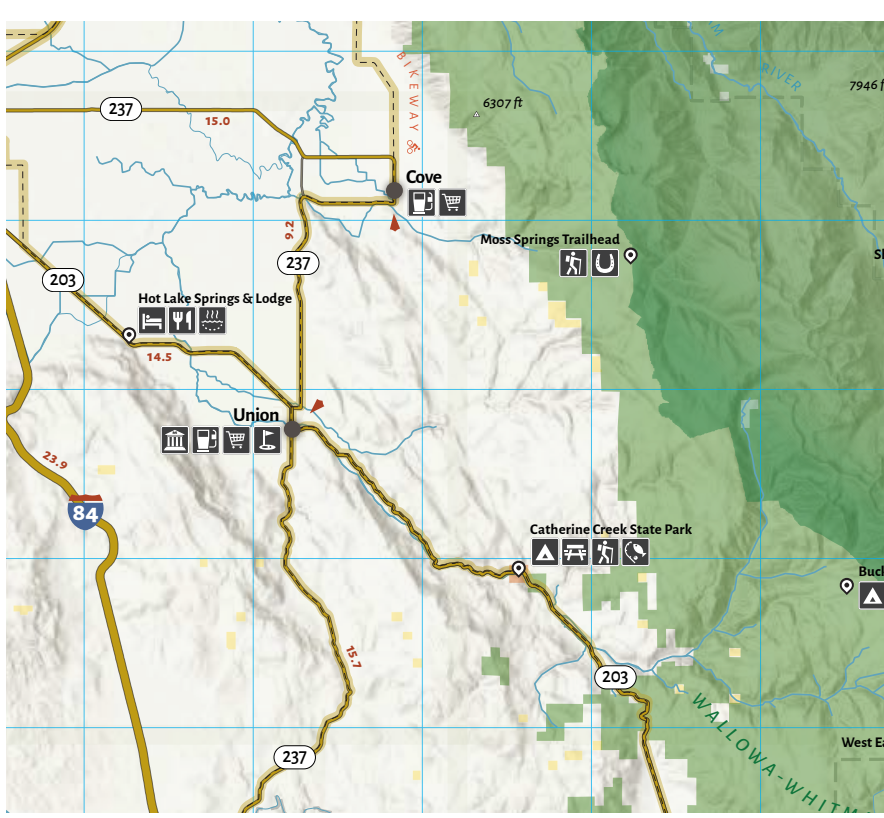
Cameron Sanders

## WALLOWA LAKE & THE EAGLE CAP WILDERNESS



Wallowa Lake and the Eagle Cap Wilderness are two of Oregon's greatest natural treasures. Bounded by 19,000-year-old glacial moraines, the 300-foot deep lake just south of Joseph offers scenic entrances to the wilderness beyond. Wallowa Lake State Park and campground at the south end and Wallowa County Park at the north end of the lake provide access for boating, swimming and paddleboarding. Trails lead to the top of the East Moraine Community Forest from both the east and west sides of the East Moraine that towers above the lake's east banks.

## UNION COUNTY, CATHERINE STATE PARK & GATEWAY TO WILD MINAM RIVER



The fertile farmland of the Grande Ronde Valley produces mint, grass seed, sugar beets and other irrigated crops as well as raising fine livestock. The broad valley was created by faults that down-dropped the valley floor and uplifted Mt. Emily (west side) and Mt. Harris (east side). The Grande Ronde River meanders through the valley's center.

Union County offers diverse recreation, from museums and art centers to wilderness treks and mountain biking. In La Grande, you'll find Arts Center East, a historic Carnegie Library converted to an art gallery. There's also the Nightingale Gallery at Eastern Oregon University. Both host shows by artists from around the region.

The Eagle Cap Wilderness, Oregon's largest wilderness area, spans 560 square miles in the heart of the Wallowa Mountains. The area was proposed as a national park in 1929, designated a Primitive Area in 1930, and achieved Wilderness status in 1940. There is no cell phone service here.

The granitic rocks in the Wallowas formed during the collision of ancient islands with the Idaho coast about 140 million years ago. Remnants of the ancient islands compose Sacajewea, Chief Joseph Mountain and other peaks. Columbia River basalts cap the range and form the bulk of Ruby Peak, Aneroid and others. Faults uplifted the Wallowa Mountains more than 8,000 feet beginning 14 million years ago. They still produce small earthquakes.

Mountain goats and Rocky Mountain bighorn sheep roam ridgetops. Black bears, cougars, deer, elk, marmots and quercus black-tailed pine squirrels inhabit lower elevations. Hikers should be prepared for wildlife encounters and pack bear spray.

The glacially carved valleys host ponderosa and lodgepole pine, Douglas fir, grand fir and Engelmann spruce. Higher elevations sport alpine fir and whitebark pine.

Some 534 miles of trails explore Eagle Cap Wilderness rivers, forests and alpine landscapes. The Wallowa Mountains Office in Joseph can offer advice on trails, road conditions and backcountry destinations, and also sells maps and books.

Trails on the north side, including the Wallowa River Trails, Hurricane Creek Trail and Lostine River Trail, provide relatively easy access to the scenic Lakes Basin at the foot of Eagle Cap Mountain. But they, and the Lakes Basin, are also the most popular and overcrowded, offering less wilderness quiet and solitude, and less opportunity for camping than other options.

The Union County Museum in the town of Union offers perspectives on regional history. You'll also find the eastern Oregon Livestock Show and Rodeo where 4H and FFA students from around the region show their livestock in June.

Just west of La Grande, on the slopes of Mount Emily, the Mount Emily Recreation Area (MERA) beckons. There is a campground and 45 miles of non-motorized, leg-stretching trails for hiking, horseback riding and mountain biking, and another 45 miles of trails and road, separate from the non-motorized area, for motorized use. MERA is also a great place for cross-country skiing, snowshoeing and snowmobiles in winter.

Other outdoor opportunities near La Grande include Morgan Lake, offering camping, hiking, fishing and non-motorized boating. The lake is stocked annually with rainbow trout. Gangloff Park, on the north edge of La Grande, offers a short wheelchair-accessible trail, native plants and a history of the area. Ladd Marsh south of town is a 6,000-acre Oregon Dept. of Fish and Wildlife refuge—the largest hardwood bulrush wetland remaining in Northeast Oregon, providing habitat for wildlife, and a favorite spot for birders. March through June offer optimal bird and wildlife viewing. A short trail adjacent to I-84 is open year-round. Most other areas restrict access to protect wildlife. Dogs are not allowed except permitted hunting dogs in appropriate seasons. Hot Lake, just to the south on Hwy 203 has hot springs.

You can access the Wallowa Mountains and Eagle Cap Wilderness at several Union County trailheads. East of Cove, the Moss Springs

River Trail (1632). The town of Haines, on Hwy 30, 15 miles north of Baker City, offers a rodeo on every 4th of July, a steakhouse serving local beef and the Museum of Eastern Oregon.

For outdoor enthusiasts, Anthony Lakes at the north end of the Elkhorn Mountains offers a downhill ski area, snowmobiling and cross-country ski trails. In summer there's mountain biking. Yurts, Anthony Lakes Campground and Mud Lake Campground offer accommodations. It's the most accessible trailhead for the Elkhorn Crest National Recreation Trail (1611)—the highest trail in the Blue Mountains—and runs along the Elkhorn Mountain ridgeline across sub-alpine forests and grasslands. The trail offers panoramic views of the Baker Valley, the distant Wallowa Mountains and the Blue Mountains. Along the way you'll find six lakes and Rocky Mountain goats. The south end of the trail is accessible on the rugged 444 Marble Creek Road at the end of Pocatohantas Road Baker City.

Dark skies are easy to find, especially in Wallowa and Baker Counties. Plan your trip during the phases of a new moon for an especially dark sky.

**Zumwalt Prairie:** The Nature Conservancy Zumwalt Prairie Preserve offers trails suitable for dark sky views.

**Buckhorn Overlook:** Even darker and more remote than Zumwalt, Buckhorn offers wide-open views of the night sky.

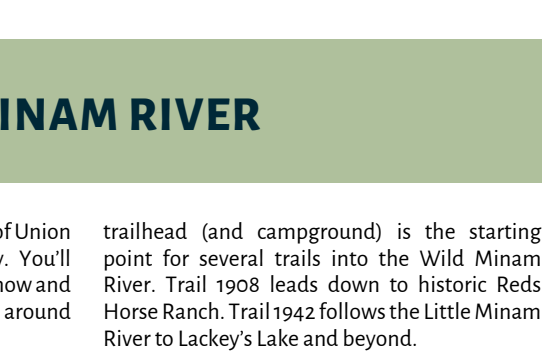
**Summit Point:** The Summit Point parking area is great for night sky viewing. For an even better look, hike up hill about ¼ of a mile along the Cliff Trail to see night skies, lookout and Cornucopia Peak.

**Hells Canyon Overlook:** Off the 39 road, the only lights you might see are from very distant Boise about 100 miles to the south.

For more authentic wilderness experiences, explore trails less trodden. These include the McCully Creek Trail (1812) east of Joseph. Explore side trails off the Lostine River Road that offer steep access to alpine splendor, including the Maxwell Lake Trail (1674), Bowman Trail to Chimney and Bowman Lake (1651) and the Francis Lake Trail (1663). From Two Pan Trailhead venture up the scenic west fork of the Lostine River (Trail 1670) to Minam Lake or Steamboat Lake instead of taking the East Fork trail to Mirror Lake. You'll avoid crowds and lower human impact on the wilderness. There are 3 USFS campgrounds along the Lostine River: Williamson, Shady and Two-Pan.

The USFS 39 road offers access to wilderness solitude. There's the Tenderfoot Trail (1819), which will connect you with Aneroid Lake, the Lick Creek Trail (1809) and the Imnaha River Trail (1616) that leads into the heart of the Eagle Cap Wilderness.

For those seeking the ultimate in NE Oregon hiking, there's also the 530-mile long Blue Mountains Trail, which begins at Wallowa Lake and continues to John Day.



Ellen Morris Bishop

# RECREATING ALONG THE HELLS CANYON SCENIC BYWAY

**Scenic Drives** Almost anywhere along the Hells Canyon Scenic Byway offers great scenery. These trips especially so...

- Flora-Troy-Grande Ronde Canyon:** From Enterprise, head north on Hwy 3, stop at the Joseph Canyon Overlook, and continue to Flowa. Follow signs for Troy. The gravel road reaches the canyon of the Grande Ronde River via sharp turns and steep grades. At Troy there's a restaurant, store, and fuel. Continue east along the Grande Ronde River to the main Lewiston Hwy. Turn right to Enterprise.
- Zumwalt Prairie-Buckhorn Overlook:** The Nature Conservancy's Zumwalt Prairie Preserve offers several hiking trails. Continue another 25 miles to a breathtaking view of the Imnaha River Canyon at Buckhorn Overlook.
- Imnaha River and/or Hat Point and Hells Canyon:** Take Hwy 350 (Imnaha Hwy) east from Joseph. At Imnaha, continue straight onto Hat Point Road—gravel, steep drop-offs and single lane with turnouts. Hat Point is 25 miles from Imnaha. The drive offers astounding views. Or follow the river along Imnaha River Road south to see the full splendor of the Imnaha Canyon and continue on USFS 39 to Hwy 82 and Pine Valley, including the town of Halfway, and the trails to Cornucopia and the SE Wallowas.
- Snake River/Huntington Road:** This gravel road extends from Richland to Huntington along the Snake River. The first 15 miles offer awe-inspiring vistas of the Snake River's canyon plus access to Hewlitt and Holcomb Parks with boat launches and camping.

- Dark Sky Viewing** Dark skies are easy to find, especially in Wallowa and Baker Counties. Plan your trip during the phases of a new moon for an especially dark sky.
- Zumwalt Prairie:** The Nature Conservancy Zumwalt Prairie Preserve offers trails suitable for dark sky views.
- Buckhorn Overlook:** Even darker and more remote than Zumwalt, Buckhorn offers wide-open views of the night sky.
- Summit Point:** The Summit Point parking area is great for night sky viewing. For an even better look, hike up hill about ¼ of a mile along the Cliff Trail to see night skies, lookout and Cornucopia Peak.
- Hells Canyon Overlook:** Off the 39 road, the only lights you might see are from very distant Boise about 100 miles to the south.

- Winter Recreation** Sno-Parks require day-use permits, which can be purchased online or found at most near-by sporting goods stores.
- Anthony Lakes:** Skiing, snowmobiling and cross-country trails.
- Ladd Canyon Sno-Park:** South of La Grande on USFS 43.
- Clear Creek Sno-Park:** 10 miles north of Halfway on USFS Road 66. Offers snowmobile, ski access to SE Wallowas.
- Catherine Summit Sno-Park:** 8 miles south of Catherine Creek State Park on Hwy 203. Snowmobile access to SW Wallowas, cross-country trails.
- Sled Springs Sno-Park:** 22 miles north of Enterprise on Hwy 3.
- Ferguson Ridge Snowpark and Ski Area:** on Tucker Down Road, about 6 miles east of Joseph on Hwy 350.
- Salt Creek Sno-Park:** Southeast of Joseph on USFS 39.

- Boating, Paddling & Rafting**
  - Wallowa Lake:** The Marina at Wallowa Lake State Park offers boat rentals. Wallowa County Park at the north end has launch areas and swimming.
  - Wallowa River:** An easy float trip from the BLM put-in at Minam except for rapids/falls at Minam State Park.
  - Grande Ronde River:** Few rapids. Put in at Troy and also at Elgin.
  - Brownlee Reservoir:** Paddling, boating, fishing, launch at Hewitt or Holcomb Parks.
  - Oxbow Reservoir:** Access on Hwy 71 at the Snake River. Several boat ramps along the road provide access for paddling, boating and fishing.
  - Hells Canyon Reservoir:** Paddling, boating, fishing, launch at Homestead, on the Oregon side of the reservoir.

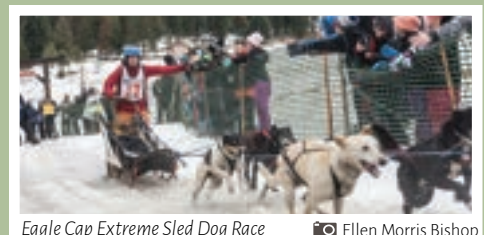
- Dog-Friendly Trails & Trips** Shade, water and easy on paws. Especially in spring, when young birds, deer, and other wildlife are vulnerable, please keep dogs on leash.
- Cornucopia (Pine Creek) Trail:** Lower portion follows Pine Creek. Expect horses and hikers.
- Lake Fork Trail:** Between Fish Lake and USFS 39 Road. Steady grade along Lake Creek.
- Bear Creek Trail:** South of Wallowa. Easy grade; closely follows aptly-named Bear Creek.
- Morgan Lake:** Short but pleasant trails and a small lake.

- Guided Trips** Trips with a local guide offer lots of knowledge, the gear you might need and access to remote backcountry. Check locally for guides and outfitters that offer trips and adventures, including:
  - Guided nature, art and/or history walks or mountain biking.
  - Horseback or llama pack trips.
  - Raft and jetboat trips (Snake and Grande Ronde rivers).
  - Fishing guides, hunting guides.

- Self-Guided Trips** Explore the region on your own with self-guided options like:
  - Wallowa County Barn Tour.
  - Grande Ronde Farm Trail.
  - Oregon Film Trail.

- Fishing for All Ages**
  - Marr Pond:** Stocked by Oregon Dept. Fish & Wildlife; close to downtown Enterprise.
  - Kinney Lake:** On private land, but stocked and open to public. East of Joseph, off Tucker Down Road.
  - Fish Lake:** Stocked small lake with campground 20 miles north of Halfway on USFS Road 66.
  - Wallowa Lake:** Stocked small lake with campground.
  - Wallowa Lake:** Fishing with beautiful views.

- Museums, Cultural & Historic Sites** For a more comprehensive guide to arts and cultural sites and events, check out the Northeast Oregon Arts Trail at neoregnarts.org
  - Joseph:**
    - Wallowa County Museum
    - Maxville Heritage Interpretive Center
    - Wallowology Natural History Center
    - Joseph Center for Arts & Culture
    - Old Chief Joseph Gravesite
  - Wallowa:**
    - Wallowa History Center and historic Bear Creek USFS station
    - Nez Perce Wallowa Homeland Visitor Center and Tamkaliks Gathering
  - La Grande/Union County:**
    - Arts Center East & historic Carnegie Library
    - Nightingale Gallery, Eastern Oregon University
    - Union County Museum
    - Elgin Museum
  - Baker City/County:**
    - Eastern Oregon Museum
    - Baker Heritage Museum
    - Leo Adler House
    - Crossroads Carnegie Art Center
    - National Historic Oregon Trail Interpretive Center
    - Pine Valley Community Museum
    - Hells Canyon Interpretive Center



Ellen Morris Bishop



Ellen Morris Bishop



Ellen Morris Bishop